

Preliminary Instructions for 3 phase ON/OFF AC line Switch P/N 9532

Warning!
Ensure AC power is disconnected and wait until all LEDs are fully off before performing any service to the inverter.

Read the Instruction Manual and Safety Warning for the model inverter you have before installing this option!

- 1) Remove rubber bumper from front cover of the control and install the switch using the rubber switch boot provided.
- 2) Remove 3 white wire jumpers from L1A-L3A and L1B-L3B on main circuit board.
- 3) Install blue wires from switch as follows:

Wire 1 to L1A
Wire 2 to L2A
Wire 3 to L3A

See drawing on the left side of page showing connection.

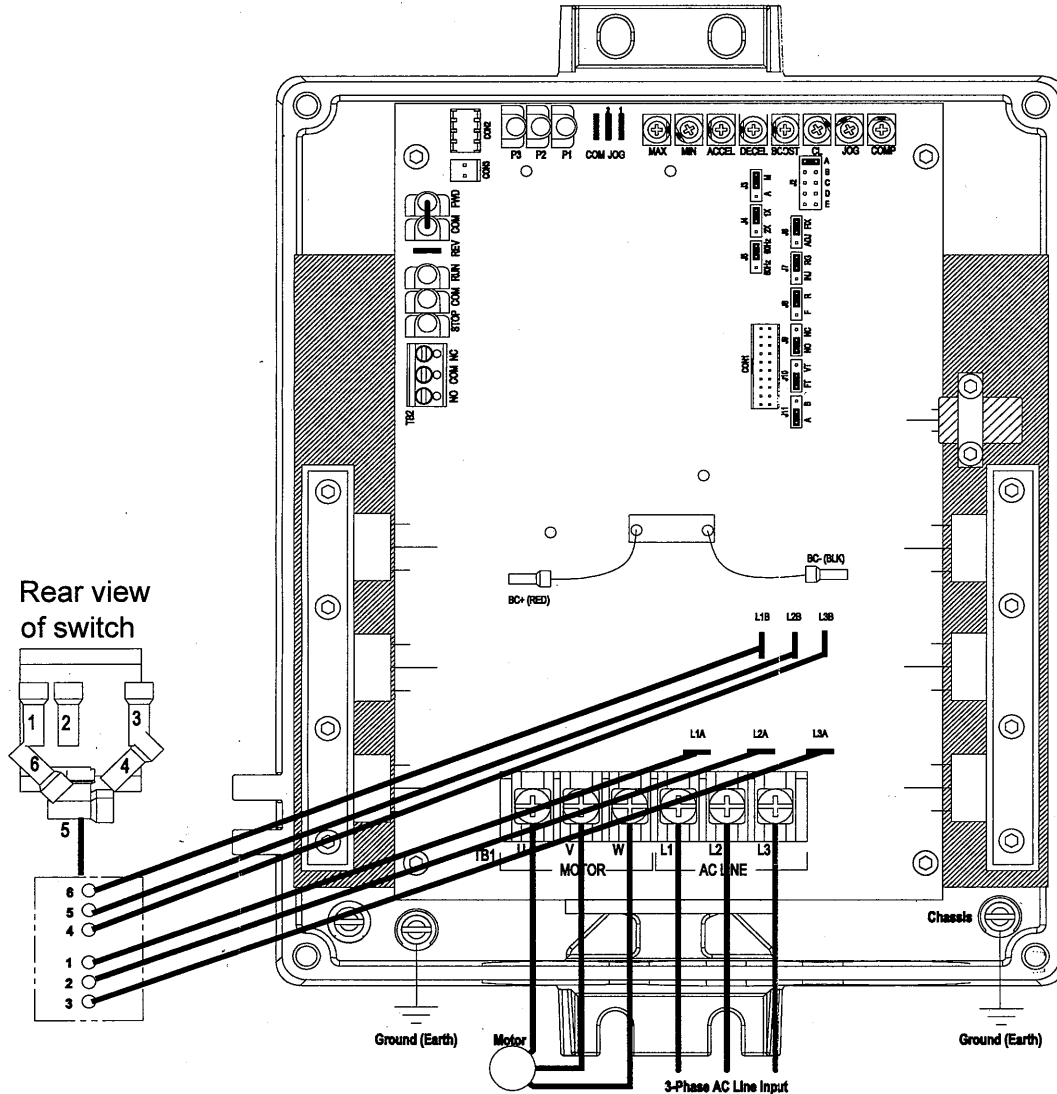
- 3) Install white wires from switch as follows:

Wire 6 to L1B
Wire 5 to L2B
Wire 4 to L3B

See drawing on the left side of page showing connection.

Be sure to verify that wiring is correct before applying AC power to the control. Follow numbers from switch (see diagram).

WARNING!!! Incorrect wiring will damage the inverter.



© COPYRIGHT 2008, KB ELECTRONICS, INC.

UNLESS OTHERWISE SPECIFIED		KB	KB ELECTRONICS, INC.	
DIMENSIONS ARE IN INCHES			12095 NW 39 ST, CORAL SPRINGS, FL 33065-2516 954-346-4900 FAX (954-346-3377)	
TOLERANCES [X.XXX] = ±0.131 [X.XXX] = ±0.085 [X.XXX] = ±0.251 [X.XX] = ±0.01		PART #	SCALE	DRAWN BY
ANGULAR = ±0.5°		A40161	N/A	J.C.
FIRST ANGLE PROJECTION		TITLE		APPROVED BY
DATE		KBAC 3 phase ON/OFF Sw inst		R.F.
DRAWING #		REV.		
03.27.08		#01		