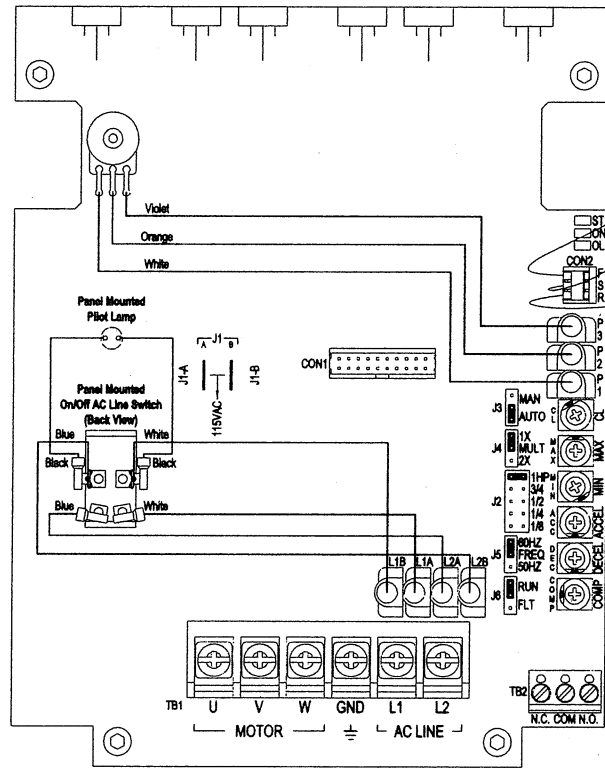
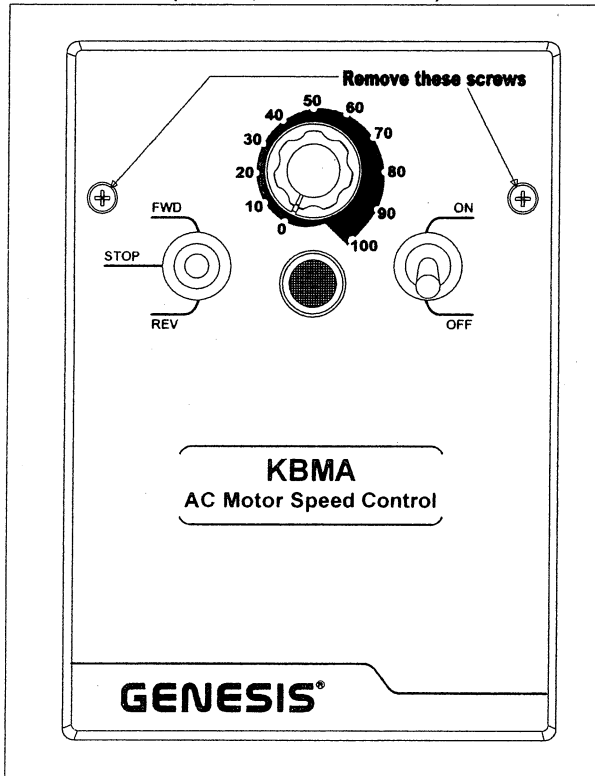
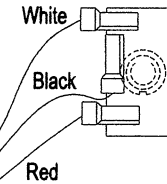


# Preliminary installation instructions for KBMA FWD-STOP-REV switch PN 9519

Control with Optional Forward-Stop-Reverse Switch  
(Shown in "STOP" Position)



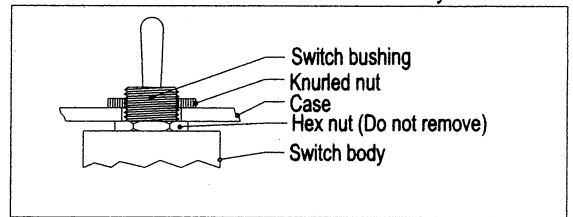
Rear View of Switch



Diagnostic LEDs (Power On, Status, Overload).  
CON2: Used for optional Forward-Stop-Reverse Switch.\*

- 1) Remove Front Cover of the KBMA control.
- 2) Remove the plug from the hole on the left hand side of the control provided for the FWD-Stop-REV switch.
- 3) Insert switch into hole and use nut provided to secure switch to the enclosure.
- 4) Remove jumper from CON2 on control board.
- 5) Install connector from switch assembly to CON2.
- 6) Reinstall front cover.

Sectional view of switch assembly



**WARNING!** You must read the Installation & Operating Manual for the KBMA before installing or operating this control!

KB Electronics, Inc. 12095 NW 39th St, Coral Springs FL 33065 PH (954) 346-4900, Fax (954) 346-3377  
info@kbelectronics.com, www.kbelectronics.com

(A40217) 2/9/2007 JC REV B